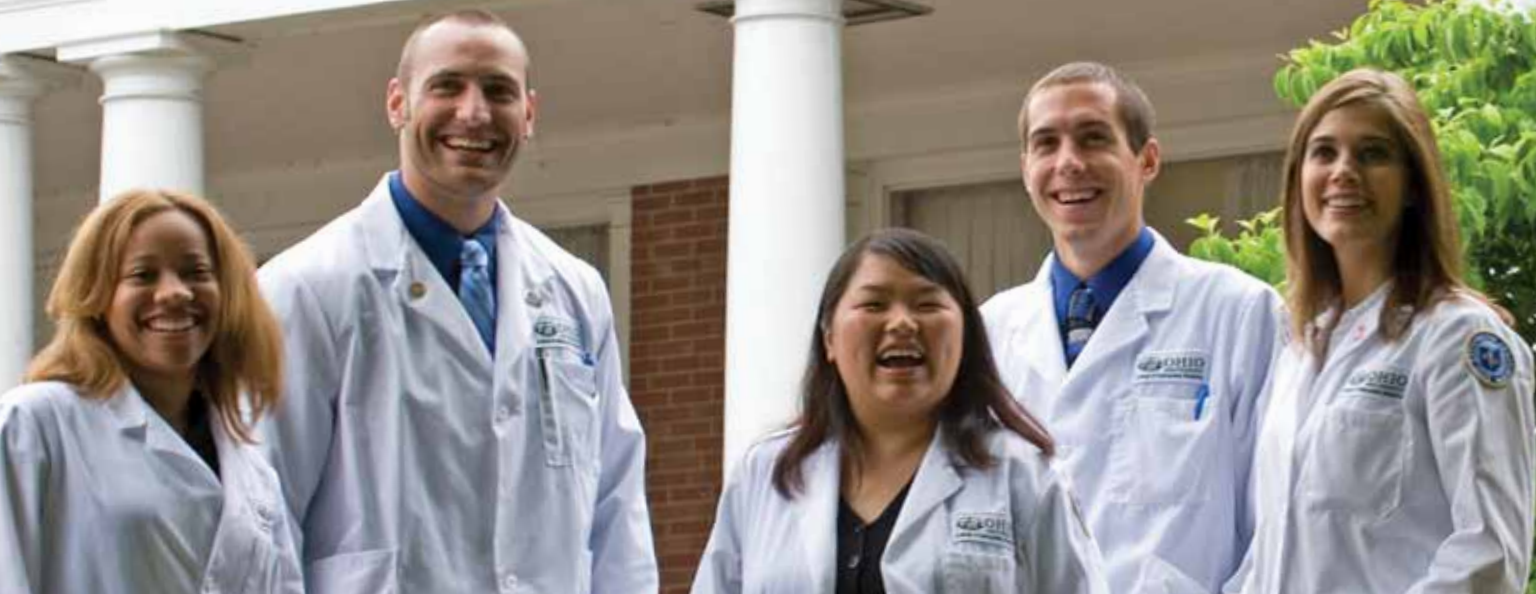
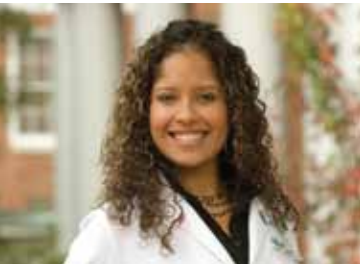


# COLLEGE OF OSTEOPATHI



# OHIO UNIVERSITY

## COLLEGE OF OSTEOPATHIC MEDICINE



VIEWBOOK 2010 – 2011

“Because of my experience doing medical research in Kenya, I decided to pursue a master’s degree in public health concurrently with my medical degree. I also participated in medical excursions to Scotland and El Salvador. The achievements I have made are a direct result of the innovative programs offered here at OU-COM”

- *Amanda McConnell, D.O. ('08)*

Neurology Resident  
**Grandview Hospital, Dayton**  
 Family Practice Fellow  
 2008 Student D.O. of the Year (OU-COM)



Collaborative, clinical, compassionate **ME**

## Contents

Years One & Two	2
Learning Environment	4
Years Three & Four	6
Research	8
Campus life	10
International Programs	12
Admissions Process Summer & Premed Programs	13



“You don’t just wake up and say, ‘OK, I’m a doctor.’ Someone—an admissions officer, a teacher, a mentor—gives you the opportunity. At OU-COM, I got the training and support to do what I love.”

**Jeffrey Stanley, D.O. ('82)**  
 Chief, Vascular Surgery  
 Director, Vascular Surgery Fellowship Program  
**Cleveland Clinic, South Pointe Hospital**



“OU-COM teaches a patient-centered approach to clinical care, which resonated with my interest in family medicine. The faculty and administrators were nurturing, helping each individual find the right professional path.”

**Sharon VanNostran, D.O. ('98)**  
 Director, Medical Education  
 Director, Family Medicine Residency Program  
**Akron City Hospital, Summa Health System**



# D I C I N E



“OU-COM encourages individuality and diversity. Most importantly, the faculty and staff really care about the success of their students. That environment helped me to pursue the medical specialty I found most exciting and challenging.”

**Georgenna Riley, D.O. (95)**  
Head, Radiology Department  
Kaiser Permanente, Cleveland



“When I look at it now, it really comes down to the great people (who) believed in me. Now I stay involved with OU-COM because with support comes support. I want to give back.”

**Timothy Barreiro, D.O. (97)**  
Internist, Pulmonology and Critical Care  
Clinical Assistant Professor, Critical Care Medicine  
St. Joseph Health Center, Youngstown

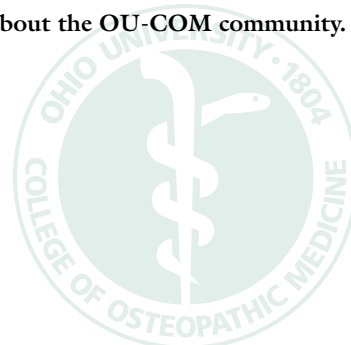
A D.O. degree from the Ohio University College of Osteopathic Medicine gives physicians an advantage in today’s health care environment. How do we differ from other medical schools?

- Clinical experience begins in the first two months of medical school.
- Small class size and low faculty-to-student ratio foster close collaboration among peers and faculty.
- Unparalleled educational support continues during third- and fourth-year clinical rotations in our statewide hospital system, the Centers for Osteopathic Research and Education.
- Students enjoy the resources of Ohio’s first public university and its beautiful Athens campus.
- Inclusive, diverse community and curricula rich in multicultural perspectives promote cultural competency.
- An emerging leader in osteopathic medical research, OU-COM offers students research opportunities both independently and with faculty members. Projects range from clinical analyses and biomedical studies to psychosocial studies.

Physician recruiters value our graduates for their scholarship; their sense of collaboration, compassion and professionalism; and their ability to confidently work with patients from day one.

When you join OU-COM, you gain a network of peers and professionals, including more than 2,500 alumni who are leaders in every field of medicine. They are primary care physicians in rural, urban, and suburban areas. They are orthopedic surgeons, neurosurgeons, and plastic surgeons. They are neonatologists, rheumatologists, radiologists and cardiologists, to name a few. They practice in Ohio, in all 50 states, and around the globe.

**Collaborative. Clinical. Compassionate. If you value these qualities, we welcome you to discover more about the OU-COM community.**



“I’ve seen the look of relief on preceptors’ faces when they learn the students they’re working with are from OU-COM. They are confident that OU-COM students immediately will be comfortable relating to patients, performing physical examinations, and working within their health care team.”

– Paige Gutheil-Henderson, D.O. ('02)

Family Medicine Physician  
**Family Practice West, Columbus**



# YEARS ONE &

## Early Clinical and Community Experiences

At OU-COM, clinical experience starts in the first two months and extends through the first two years. Students immediately begin developing clinical skills, including patient interviews, physical examinations, diagnosis and counseling in both laboratory and local clinical settings. Thanks to the Osteopathic Heritage Foundations, a \$2.3 million renovation is underway for our new Center for Clinical Training and Assessment and Free Clinic, where students work with standardized patients. The center will include a surgical suite and an emergency room.





Our students spend their first two years at the Athens campus mastering the biomedical, clinical and social fundamentals of medicine.

With an emphasis on patient care, we have designed first- and second-year learning experiences around body systems rather than disciplines. We integrate anatomical studies and biomedical sciences in a more clinically relevant way, using **early clinical contact**, case studies, problem sets and collaborative **small-group learning**.

To address different learning styles, OU-COM offers two very distinct curricular experiences: the **Clinical Presentation Continuum (CPC)** and the **Patient-Centered Continuum (PCC)**. Both curricula incorporate early interactions with patients and small-group case studies.

- The **CPC** offers a more structured, faculty-directed learning environment, consisting of week-long modules based on clinical presentations of patient symptoms. Students master fundamentals of common disease processes through lectures, panel discussions, problem sets, clinical and biomedical labs, and small-group case analysis.
- In the **PCC**, students set their own learning objectives based on patient-centered case studies designed by faculty. The PCC emphasizes case analysis, small-group collaboration and problem solving as primary educational tools, with guidance from faculty.

All admitted students are initially placed into the CPC curriculum. Before classes begin, interested students may then apply for entrance into the PCC curriculum, which is limited to 24 students per class. For more details about both curricular tracks, visit [www.oucom.ohiou.edu/admissions/curricula.htm](http://www.oucom.ohiou.edu/admissions/curricula.htm).

OU-COM also offers **dual degree programs**. A medical degree combined with studies in biomedical research (Ph.D.), public health policy (MPH, MHA), or business (MBA) can prepare students for specialized careers such as epidemiology and hospital administration. Visit [www.oucom.ohiou.edu/Admissions/dual-degree-do-masters.htm](http://www.oucom.ohiou.edu/Admissions/dual-degree-do-masters.htm).

# TWO

## Early clinical contact



### Anatomy Immersion

All students begin coursework together during the August Osteopathic Clinical Anatomy Orientation. During this month-long immersion, students divide their time between our newly renovated, state-of-the-art gross anatomy lab and our osteopathic manipulative medicine (OMM) lab. This integrated method of teaching musculoskeletal anatomy lays a foundation for clinical problem-solving and evidence-based medicine. After the immersion, gross anatomy and OMM lab sessions are woven throughout the curricula, an approach that grounds both in the context of patient care.

OU-COM students often comment about our supportive, inclusive atmosphere. We recruit from a wide variety of backgrounds, promote cultural competency and nurture a spirit of community through collaborative learning methods

Our students represent a full range of life experiences, from first-generation student doctors to multinational students and nontraditional students. Minority groups comprise approximately 25 percent of each entering class. Regardless of background, all students are trained to meet the needs of an increasingly diverse patient population. We integrate multicultural perspectives into both curricular tracks. For example, to better serve patients with limited English language skills, all OU-COM students train in our Medical Interpreter Simulation Laboratory, supplemented with medical Spanish workshops.

Additionally, our Department of Social Medicine, the only such department in an osteopathic medical school and one of just six nationwide, provides students a social and humanistic context to medical studies. Its multidisciplinary faculty and staff promote health and social justice by examining disparities in medical care and studying how cultural variables shape health policy and delivery of care. Specific opportunities and support are available for students interested in conducting research into socio-cultural health issues through this and other departments.

Our students also manage a chapter of the Student National Medical Association (SNMA), the nation's oldest and largest independent, student-run organization focused on the needs and concerns of medical students of color. The SNMA conducts health screenings for minority communities in Southeastern Ohio and coordinates events, such as the college's annual Multicultural Extravaganza, which celebrates the talents and varied backgrounds of OU-COM, Ohio University's most culturally diverse college.

Supportive, inclusive

LEARNIN

## Academic Support

We understand the challenges of medical school, with its high volume of information and rigorous schedule. Our faculty members spend a great deal of time with students outside the classroom, and we offer peer and faculty tutors, with additional academic support through our full-time, trained learning specialist (right). Our peer mentoring program, COMrade, pairs incoming students with second-year students, who help ease the transition to medical school.





“I wanted a place where the interactions and relationships would help offset the pressures of medical school. I felt that at OU-COM, people were grounded and approachable, whether it was students, faculty or staff. It’s a family atmosphere.”

– Charles Brown, D.O. ('09)

Psychiatry Resident  
**Akron General Medical Center**

# GENVIRONMENT



## Cultural Competency

OU-COM trains students in cultural competency through its voluntary—and very popular—Dumela seminar, named for a South African greeting that means, “I affirm you, I believe in you, and I see the great potential within you.” Participants examine their own cultural identities and learn to negotiate culturally based patient beliefs about medical care. “This is not cultural sensitivity training,” says Dumela facilitator Mark Orbe, Ph.D. “It’s about getting the most out of a 15-minute meeting with any patient.”



“The CORE system provides broad educational and clinical experiences, while helping students to connect with physicians throughout the statewide hospital system. My CORE rotations helped me realize that neurology was the field I wanted to pursue.”

- Eric Baron, D.O. ('04)

Neurologist  
**Neurological Institute, Cleveland Clinic**

# YEARS THREE & F

## Clinical Training in the CORE

Our statewide network of teaching hospitals offers clinical training experiences representing the full range of medical fields, from primary care to specialty medicine, including surgery, neurology, neonatal care, orthopedics, anesthesiology and cardiology, to name just a few. (At right) Students rotate with Jay Shubrook, D.O. ('96), associate professor of family medicine and noted diabetes researcher, who was named the 2009 Young Physician of the Year by the American College of Osteopathic Family Physicians.





Our students spend their third and fourth years of medical school in a clerkship within our nationally recognized **Centers for Osteopathic Research and Education (CORE)** system, one of the largest, most advanced, and best supported osteopathic medical education consortiums in the United States.

In our more than 25 Ohio teaching hospitals, our students explore primary care and the full range of specialties in rural, suburban and urban practice settings. During CORE rotations, students gain the clinical skills to prosper in today's rapidly-changing medical practice environment.

CORE clinical faculty and staff members are dedicated to meeting the on-site needs of students. CORE assistant deans and administrators work with our students to arrange required rotations at their base CORE hospitals and to schedule elective rotations at other CORE hospitals. External rotations in fields or at sites of particular interest can be arranged, both close to home and abroad.

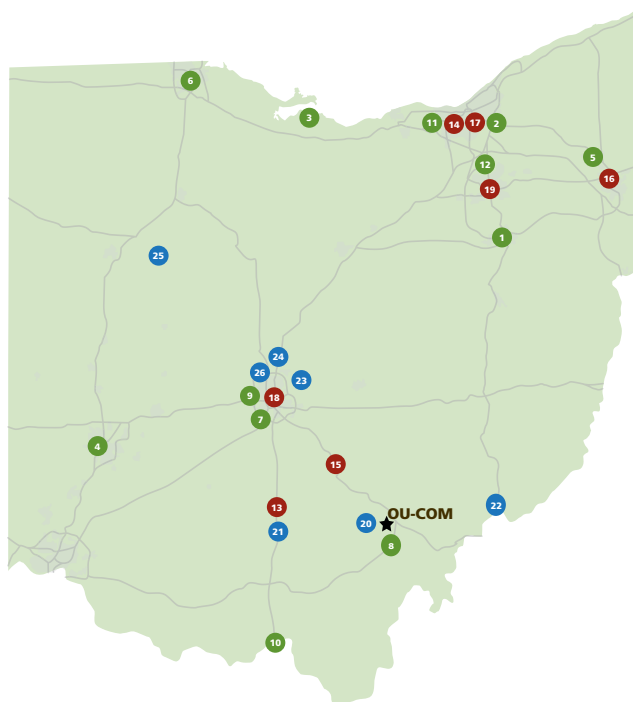
Many students take advantage of the full continuum of medical education offered by the CORE, including internships and residencies in more than 90 programs available at various sites around the state.

For more information about CORE hospitals and their programs, please visit [www.ohiocore.org](http://www.ohiocore.org).



OUR

The CORE



## Centers For Osteopathic Research and Education

### Participating Members

1. Affinity Medical Center
2. Cleveland Clinic/South Pointe Hospital
3. Firelands Regional Medical Center
4. Grandview Medical Center
5. Humility of Mary Health Partners/  
St. Joseph Health Center
6. Mercy St. Vincent Medical Center
7. Mount Carmel West Medical Center
8. O'Bleness Memorial Hospital
9. OhioHealth/Doctors Hospital Columbus
10. Southern Ohio Medical Center
11. St. John Medical Center
12. Summa Health System/Summa Western  
Reserve Hospital

### Associate Members

13. Adena Regional Medical Center  
Chillicothe
14. Cleveland Clinic/Fairview Hospital
15. Fairfield Medical Center
16. Humility of Mary Health Partners/St.  
Elizabeth Health Center
17. MetroHealth Medical Center
18. OhioHealth/Grant Medical Center
19. Summa Health System/Akron City  
Hospital

### Ancillary Members

20. Appalachian Behavioral Health Center
21. Chillicothe Veterans Administration Medical Center
22. Marietta Memorial Hospital
23. Mount Carmel/New Albany Surgical Hospital
24. Mount Carmel/St. Ann's Hospital
25. Ohio Northern University Raabe College of Pharmacy
26. OhioHealth/Riverside Methodist Hospital

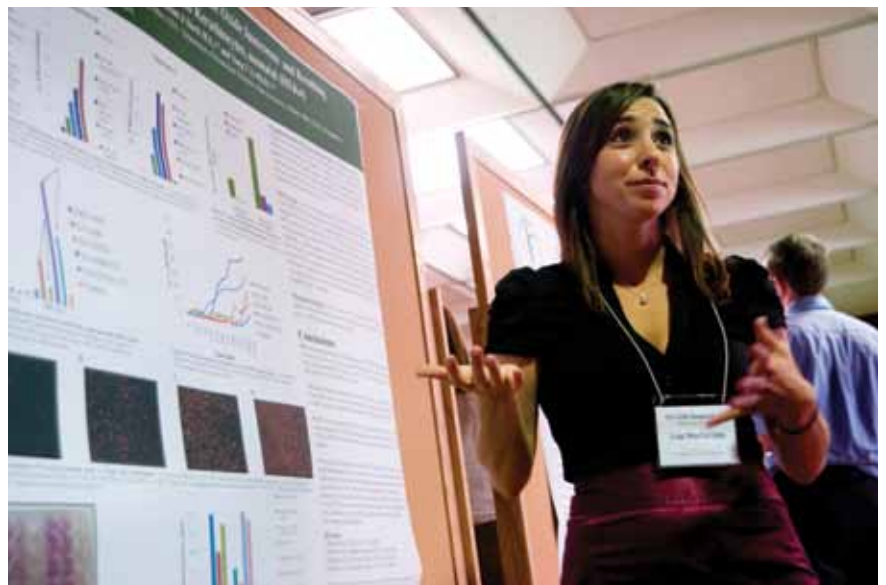
**“For my research in El Salvador,  
I transformed classroom knowledge  
and skills into fully functional tools,  
which I will use in my future  
profession. This experience enhanced  
my confidence and effectiveness in  
serving patients, and it taught me  
cross-cultural communication  
skills needed to effectively treat a  
diverse population.”**

*– Catalina Soto, OMS IV*

# RESEARCH

## Research and Scholarly Advancement Fellowship

All OU-COM students who complete year one of medical school by the end of spring quarter may apply for a Research and Scholarly Advancement Fellowship (RSAF). This ten-week summer program provides selected medical students with an introduction to self-directed scholarly work, from clinical studies to social medicine research, under the guidance of a member of our faculty.



Research puts students on the cutting edge of medicine. Whether our students assist with faculty research or launch their own projects, they find unparalleled opportunities and support.

Our faculty members conduct groundbreaking bench-to-bedside research, often with student assistance. Collaborations between OU-COM and other colleges include the development of computer-assisted diabetes management and progress toward eradicating the international epidemic, Chagas disease.

OU-COM research into diabetes, obesity and cardiovascular disease helps advance treatment solutions for conditions endemic to the United States. In 2008, *Forbes* magazine ranked Ohio University fourth in the nation for research return on investment, and in 2009, the Association of University Technology Managers ranked Ohio University the top public university in the state for research-generated licensing revenue. Most of this royalty income stems from an OU-COM faculty member's development of Somavert<sup>®</sup>, the first drug to effectively treat the growth hormone disorder, acromegaly.

Psychosocial research at OU-COM explores the health status, behaviors and risk factors of underserved populations from Southeastern Ohio to Ecuador and Kenya. Such work has informed counseling strategies for aging populations with AIDS and revealed the prevalence of diabetes in understudied populations.

Our research efforts recently earned a commendation from the American Osteopathic Association Commission on Osteopathic College Accreditation. The commission praised our Research and Scholarly Advancement Fellowship, the Centers for Osteopathic Research and Education Office of Research, the financial and administrative support for research, and our new Academic & Research Center.

For information about opportunities for student research, go to [www.oucom.ohiou.edu/Admissions/research-opp.htm](http://www.oucom.ohiou.edu/Admissions/research-opp.htm).

## Leaders in clinical and bench research



### New Facility for Biomedical Research

The Osteopathic Heritage Foundations and Charles R. and Marilyn Y. Stuckey Academic & Research Center (ARC) opened in January 2010. This \$34.5 million state-of-the-art facility represents the future of diabetes and cancer research at Ohio University. Designed to promote collaboration, the ARC brings together physicians, students, engineers and biomedical scientists to develop new diagnostic methods and treatments for diabetes and cancer.

At OU-COM, students enjoy the bustling campus life and state-of-the-art facilities of Ohio's oldest state university, set in a culturally rich, quintessential college town.

Just over an hour from Columbus and only a few from Cleveland, Cincinnati and Pittsburgh, Athens has long been a popular destination for arts and entertainment. Whether it's live music, theater or dance performances; poetry slams, art or photography exhibits; film debuts or thought-provoking lectures, there is always something going on. Foodies enjoy a full range of dining options, including distinctive local establishments, and Athens hosts one of the country's best farmers markets according to *Audubon* magazine.

The 168,000 square-foot Ping Center—one of the largest campus recreation centers in the country—anchors the active life with indoor tracks, weight training, a climbing wall and more. Whether you love swimming, ice skating, golfing, tennis, scuba, basketball, running, climbing or dancing, Ohio University delivers. More of a spectator than a player? With Ohio University's many men's and women's NCAA Division I teams, a sports fan has plenty to choose from.

The City of Athens, integrated seamlessly into the university campus, also offers a large recreation center, an uptown area dotted with interesting shops, one of the most innovative and challenging skate parks in the Eastern United States, and a 20-mile bike path along the Hocking River. Its location in the wooded foothills of Southeastern Ohio offers the perfect retreat for hikers, kayakers and campers.



Welcoming, dynam





“At OU-COM, I get the best of both worlds. I get the rich campus life of a state university with intramural sports, great libraries, an active night-life and a variety of campus events and activities. I also get the small medical school experience: the small class size, the camaraderie and the one-on-one time with preceptors.”

*- Neeraj Sathe, OMS IV*

# ic CAMPUS LIFE



“SHARE Kenya allowed me to experience a different culture and gain clinical skills with unfamiliar pathology such as malaria, typhoid and tuberculosis. Witnessing firsthand the global disparities in health care reinforced my desire to make international medicine a part of my career as a physician.”

– Maria Streng, D.O. ('09)

Family Medicine Resident  
Fairview Hospital, Cleveland Clinic



# INTERNATIONAL PROGRAMS



Are you interested in studying tropical disease, improving a foreign language or sharpening your diagnostic skills? Do you want to explore how different countries manage health care? Maybe you want to help some of the world's most medically underserved populations.

Our students can participate in health research and service; develop a global perspective on health, disease and health care delivery; and expand their clinical skills through a number of international programs:

- Community-Based Tropical Disease Research (research)—Ecuador
- Ecuador Rotation (clinical)—Ecuador
- Tropical Disease Biology Workshop (academic)—Ecuador
- Kenyan Grandparents Study (research)—Kenya
- SHARE (Student Health Assistance Rural Experience) Kenya-Ohio (clinical)— Kenya
- Village Mountain Mission (clinical)—Dominican Republic
- CEDEINFA (Center for the Complete Development of Children and Their Families) Partnership (clinical)—San Salvador
- CEDEINFA Partnership (clinical)—El Salvador
- Honduras Surgery Rotation (clinical)—Honduras
- Introduction to the Galapagos Islands Natural History (academic)—Galapagos Islands
- Design-your-own Independent International Rotation (research or clinical)



For program details and additional opportunities, visit [www.oucom.ohiou.edu/International/index.htm](http://www.oucom.ohiou.edu/International/index.htm).

# THE ADMISSIONS PROCESS

OU-COM uses a rolling admissions process, so you will receive the decision of the admissions committee within a week of your interview. But first, you need to apply.

## Requirements

- Prior completion of a four-year baccalaureate degree from a regionally accredited college or university, including the following: six semester hours or nine quarter hours of English, behavioral sciences (e.g., psychology, sociology or anthropology), and eight semester hours or twelve quarter hours each in biology/zoology, general chemistry, organic chemistry and physics, with the appropriate labs.
- MCAT scores, which must be no older than 3 years prior to admission. If applying for fall 2011, scores can be no older than January 2008.
- Compliance with health and technical standards that include a criminal background check and proof of immunization titers.
- A tablet laptop computer is required. Most areas on campus have either A or B wireless network Internet access.
- Recommendation letters from two natural science (e.g., biology, chemistry, physics) classroom/lab professors who have taught you for a grade. You may also submit an evaluation from a preprofessional committee.

## Applications and deadlines

All primary application materials can be obtained through the American Association of Colleges of Osteopathic Medicine Application Service (AACOMAS) web site at [www.aacom.org](http://www.aacom.org).

Primary application materials are available the year before you hope to enroll, beginning in May and continuing until February of the year you hope to matriculate (for example, May 1, 2010, to Feb. 1, 2011, for fall 2011 enrollment).

Secondary applications are sent electronically to the e-mail address that you provide on your AACOMAS application. Please be sure your e-mail client is set to accept e-mails from [oucom.ohiou.edu](mailto:oucom.ohiou.edu) addresses. **The deadline for submission of secondary application materials is March 15 of the year in which you plan to enroll. However, due to the nature of rolling admissions, early applicants receive priority consideration.**

Interviews are conducted from September through April.

## Financial advising

We understand the financial pressures of attending medical school. Our Office of Student Affairs staff can help you plan for the expenses of medical school through budget planning workshops, financial aid counseling and assistance in exploring alternative forms of financial assistance, such as community sponsorship and military service programs. More than 95 percent of our students receive some form of financial assistance.

For information or assistance, go to [www.oucom.ohiou.edu/saffairs/](http://www.oucom.ohiou.edu/saffairs/).

## ADDITIONAL RESOURCES

[www.osteopathic.org](http://www.osteopathic.org)

The American Osteopathic Association (AOA) is the accrediting body for all colleges of osteopathic medicine. This Web page has a link to find D.O.s, a history of osteopathic medicine and current medical news.

[www.aacom.org](http://www.aacom.org)

Visit the American Association of Colleges of Osteopathic Medicine's site to learn more about the colleges of osteopathic medicine.

[aacomas.aacom.org](http://aacomas.aacom.org)

All but one college of osteopathic medicine use the centralized application service offered by AACOMAS.

[www.studentdo.com](http://www.studentdo.com)

The Student Osteopathic Medical Association (SOMA) offers scholarship information and other benefits of being a Pre-SOMA member.

*The D.O.'s: Osteopathic Medicine in America*

by Norman Gevitz, Ph.D., former chair of social medicine, Ohio University College of Osteopathic Medicine. Often cited by students as "a good read," this book outlines the history of osteopathic medicine in the U.S. It is published by Johns Hopkins Press and is currently in its 2nd edition.

# SUMMER & PREMED PROGRAMS



## Summer Undergraduate Research Fellowship

If you are an undergraduate student looking for research experience or a taste of medical school, our Summer Undergraduate Research Fellowship (SURF) might be right for you. The SURF program gives undergraduate students seven weeks of active laboratory work under the guidance of a biomedical sciences faculty member.

[www.oucom.ohiou.edu/Admissions/surfprog.htm](http://www.oucom.ohiou.edu/Admissions/surfprog.htm)

## Summer Scholars

Also for aspiring medical students, OU-COM offers the Summer Scholars program, a six-week program that prepares 25 selected students for the rigors of medical school through courses taught by OU-COM faculty. To qualify, applicants must be from an underrepresented minority group and/or an educationally or economically disadvantaged background. This program is open to both undergraduate and graduate students, as well as those who have already completed their degree(s).

[www.oucom.ohiou.edu/SummerScholars](http://www.oucom.ohiou.edu/SummerScholars)

Both SURF and Summer Scholars programs include room, board, living expenses and an opportunity for an admission interview for eligible participants. The SURF program also includes educational credit. For more on these programs, go to

[www.oucom.ohiou.edu/Admissions/summer\\_programs.htm](http://www.oucom.ohiou.edu/Admissions/summer_programs.htm).

## Post-Baccalaureate Program

To strengthen competitiveness for medical school, select students from the "wait list" are invited to participate in the college's Post-Baccalaureate Program. The one-year program is designed for those who want extra classroom work to become successful matriculants to our college. Post-Baccalaureate students who maintain a 3.0 GPA for program coursework and participate in required activities are guaranteed admission to OU-COM for the following academic year.

## Prematriculation Program

Admitted first-year students from underrepresented backgrounds are invited to participate in the Prematriculation Program, a four-week summer introduction to the medical school experience. The program offers faculty-led courses in sciences such as physiology, immunology and gross anatomy, and workshops on study strategies and time management. Students who complete the Post-Baccalaureate Program are required to participate in the Prematriculation Program.

For future students hoping  
to get a head start  
and current students looking  
for research fellowships,  
we offer an array of summer  
opportunities.





## Osteopathic Medicine

Each year, one out of five American medical students enrolls at an osteopathic medical school, joining one of the nation's fastest growing health care professions. The osteopathic medical focus on health promotion, disease prevention and primary care is setting the standard for the future of medical education and practice.

The "total patient" approach to health care, pioneered more than 125 years ago by the founder of osteopathic medicine, Dr. Andrew Taylor Still, remains the foundation for the way D.O.s (Doctors of Osteopathic Medicine) practice today. Dissatisfied by the ineffectiveness of 19th century medicine, Dr. Still emphasized wellness, preventive medicine, the unity of all body systems, and the prominent role of the musculoskeletal system in restoring health.

Osteopathic medical training follows four basic principles:

- The body is a single unit.
- The body has intrinsic self-regulatory and healing mechanisms.
- The body's structure and function are interrelated.
- Disease is an effect, not a cause.

The application of these principles allows our graduates—as family doctors, surgeons and physicians of all specialties—to bring patients the most comprehensive health care available.



Office of Admissions  
102 Grosvenor Hall  
Athens, Ohio 45701 (800) 345-1560  
[www.oucom.ohiou.edu](http://www.oucom.ohiou.edu)