



# OHIO UNIVERSITY

## COLLEGE OF OSTEOPATHIC MEDICINE

*"I wanted a school that took **medicine** seriously...one that would help me  
integrate what I'd be **learning** ...a place that would help me weave  
together the **mind, body, spirit** aspect of patients."*

# So you want to be a doctor?

*You're committed to becoming a doctor, and we're committed to helping you get there.*

From admission through graduation, you are part of a campus culture that is learning-centered and supportive. Faculty and staff are with you every step of the way to make sure you are well prepared for your classroom, small group and clinical experiences.

Students in the Ohio University College of Osteopathic Medicine are intelligent, engaging and motivated. They have excellent interpersonal communication skills, a caring and compassionate attitude, a commitment to health care and a strong commitment to serving those most in need. They also appreciate the tenets of osteopathic medicine, which includes respecting the dignity of each individual.

While we have a highly selective admissions process with an admit rate of approximately four percent, grades and test scores are not all that we look for. We also look for all of the characteristics necessary for becoming an outstanding physician.

The people who make up our classes aren't all typical premed majors. There are former mechanical engineers, physicists, emergency medical technicians and pharmacists, who hail from large cities and small towns and who represent an increasingly diverse population.

As part of such a diverse student population, it's important to us that you feel connected to the OU-COM community. To that end, we've done our best to create a friendly, welcoming, family atmosphere at the college.



*"The interview process was friendly and non-threatening, and the atmosphere at the college is the same. It fits well with the holistic philosophy of osteopathic medicine."*

Tracey Banks  
OMS II

# THE ADMISSIONS PROCESS

OU-COM uses a rolling admissions process, so you'll learn the decision of the admissions committee within a week of your interview. But first, here's what you need to do to apply.

## Requirements

- Prior completion of a four-year baccalaureate degree from a regionally accredited college or university, including;
  - six semester hours or nine quarter hours of English, behavioral sciences (e.g. psychology, sociology or anthropology), and
  - eight semester hours or twelve quarter hours each in biology/zoology, general chemistry, organic chemistry and physics, with the appropriate labs
- MCAT scores, which must be no older than 3 years prior to admission. If applying for fall 2008, scores can be no older than January 2005
- Compliance with health and technical standards that include a criminal background check and proof of immunization titers
- A laptop computer. A tablet laptop computer is suggested. Most areas on campus have either A or B wireless network Internet access.

## How to apply/deadlines

All primary application materials can be obtained through the American Association of Colleges of Osteopathic Medicine Application Service (AACOMAS) Web site at [www.aacom.org](http://www.aacom.org).

Primary application materials are available the year before you hope to enroll, beginning in June and continuing until February of the year you hope to matriculate (for example, June 1, 2007, to February 1, 2008, for fall 2008 enrollment.)

Secondary applications are sent electronically to the e-mail address that you provide on your AACOMAS application. Please be sure your e-mail client is set to accept e-mails from oucom.ohiou.edu addresses. The deadline for submission for secondary application materials is March 15 of the year in which you plan to enroll.

Interviews are conducted from October through April.

## What it costs

Medical education is an expensive endeavor, but the Office of Student Affairs staff are here to help you plan for these expenses through budget planning workshops, financial aid counseling and assistance in exploring alternative forms of financial assistance, such as community sponsorship and military service programs. More than 95 percent of our students receive some form of financial assistance. For information or assistance, go to [www.oucom.ohiou.edu/saffairs/](http://www.oucom.ohiou.edu/saffairs/).



# OSTEOPATHIC MEDICINE

Web sites for information and resources; historic and current accounts of the osteopathic profession.

## [www.osteopathic.org](http://www.osteopathic.org)

The American Osteopathic Association (AOA) is the accrediting body for all colleges of osteopathic medicine. This Web page has a link to find D.O.s, a history of osteopathic medicine and current medical news.

## [www.aacom.org](http://www.aacom.org)

Visit the American Association of Colleges of Osteopathic Medicine's site to learn more about the colleges of osteopathic medicine.

## <http://aacomas.aacom.org>

All colleges of osteopathic medicine, with the exception of the Texas College of Osteopathic Medicine, use the centralized application service offered by AACOMAS.

## [www.studentdo.com](http://www.studentdo.com)

This is the Web site for the Student Osteopathic Medical Association (SOMA). Check out this site for scholarship information and other benefits of being a Pre-SOMA member.

## Other sources for information...

### <http://l.webring.com/hub?ring=osteopathic>

A listing of various Web sites related to osteopathic medicine.

## *The D.O.'s*

by Dr. Norman Gevitz

Often cited by students as a "good read" about the history of osteopathic medicine. This book is currently in its 2nd edition and is published by Johns Hopkins Press. Dr. Gevitz is on the faculty of OU-COM.

# YOUR FIRST TWO YEARS

One learning style doesn't fit everyone, so we've created two curricular tracks to help you learn in a way that's most comfortable for you. Both tracks take advantage of small group learning and are planned and coordinated by multi-disciplinary teams of faculty.

The **Clinical Presentation Continuum (CPC)** curriculum provides you with opportunities to learn the biomedical science fundamentals of medicine in an integrated, clinically-relevant **lecture environment**. This faculty-directed curriculum uses a systems-based approach as its organizing focus.

If you prefer a more structured learning environment with faculty-determined learning objectives, the CPC curricular track may be conducive to your learning style.

The **Patient Centered Continuum (PCC)** curriculum is a student-driven educational process. This curriculum offers a **problem-based learning environment** that uses patient cases to integrate the clinical and biomedical sciences and emphasizes small group discussions, case analysis, collaborative learning and problem solving as its primary educational tools. This allows you to build on a logical progression of knowledge that begins your first day of medical school and continues through your residency years.

If you prefer to establish your own learning objectives and enjoy small group dynamics, the PCC curricular track might mesh well with your learning style.

Enrollment in the PCC is limited to 21 for each entering class.

## *Professionalism and expectations:*

As a member of the medical profession, I will be truthful and maintain the highest standards of academic and personal honesty by not cheating or plagiarizing or tolerating that behavior in others.

—OU-COM Student Honor Code

For more details about choosing either curricular track, visit [www.oucom.ohiou.edu/admissions/curricula.htm](http://www.oucom.ohiou.edu/admissions/curricula.htm).

During the month of August, students in both tracks begin their medical education together in the **Osteopathic Clinical Anatomy Orientation**, commonly called "the immersion," which meets four days per week, with three scheduled hours of labs per day. Dissection of human cadavers, imaging studies, and discussions of clinical anatomy in an interactive osteopathic manipulative medicine laboratory setting introduce you to the structure of the human body in a clinically relevant manner, providing correlations of normal anatomy to common disease states.

You might want to consider one of our dual degree programs. Combining your medical degree with additional graduate studies can prepare you for a specialized medical career such as biomedical or epidemiological research, or perhaps, hospital administration. [www.oucom.ohiou.edu/Admissions/dual-degree-do-phd.htm](http://www.oucom.ohiou.edu/Admissions/dual-degree-do-phd.htm).



Diversity is more than a number at OU-COM. It's about creating a dynamic learning environment that stimulates your thinking and prepares you to practice medicine in the real world. Training culturally competent physicians is important to us.

The **Department of Social Medicine**, the only such department in an osteopathic medical school and one of six in the country, is committed to improving health promotion, disease prevention, social justice and the human condition. Its multi-disciplinary faculty and staff study how culture and society define health and illness and shape health-care delivery. To learn more about their programs, visit [www.oucom.ohiou.edu/SOM/](http://www.oucom.ohiou.edu/SOM/).

## YEARS THREE AND FOUR

Your third—OMS III—and fourth—OMS IV—years of medical school will be spent in a clerkship in our nationally recognized **Centers for Osteopathic Research and Education (CORE)** system, one of the nation's largest, most advanced and best supported medical education consortiums.

By combining the collective resources of OU-COM with more than 18 Ohio teaching hospitals in the CORE, you'll receive the clinical educational innovation you'll need to prosper in the ever-changing medical practice environment.

Your clerkship years give you an opportunity to explore primary and specialty care in community-based and urban hospitals, trauma centers, and rural, suburban and urban practice settings, while you continue your osteopathic medical education.

CORE administrators conveniently arrange your clerkship and major rotations for you at your base CORE hospital. You also have the option of choosing electives and rotating through other CORE hospitals or hospitals of your choice. International rotations are also a possibility.

In addition to offering outstanding clerkship experiences, the CORE also provides you with the opportunity to pursue graduate medical education programming. A wealth of internships, primary care and sub-specialty residencies are also available throughout the CORE system. For more information, visit [www.ohiocoreonline.org](http://www.ohiocoreonline.org).



*"The **CORE System** is the premier osteopathic educational consortium in the nation. Students, interns and residents benefit from an educationally rich statewide environment connecting small rural, large urban and intermediate-size hospitals. Their integrated, multi-level educational opportunities with primary care emphasis and extensive specialty training in all disciplines are second to none in all of medical education."*

Keith Watson, D.O., Associate Dean,  
Graduate Medical Education

# RESEARCH AT OU-COM

Uniquely positioned in Appalachia, OU-COM is making considerable contributions to the clinical, biomedical, and social research communities on topics related to primary care, rural health care, and medically underserved and vulnerable populations.

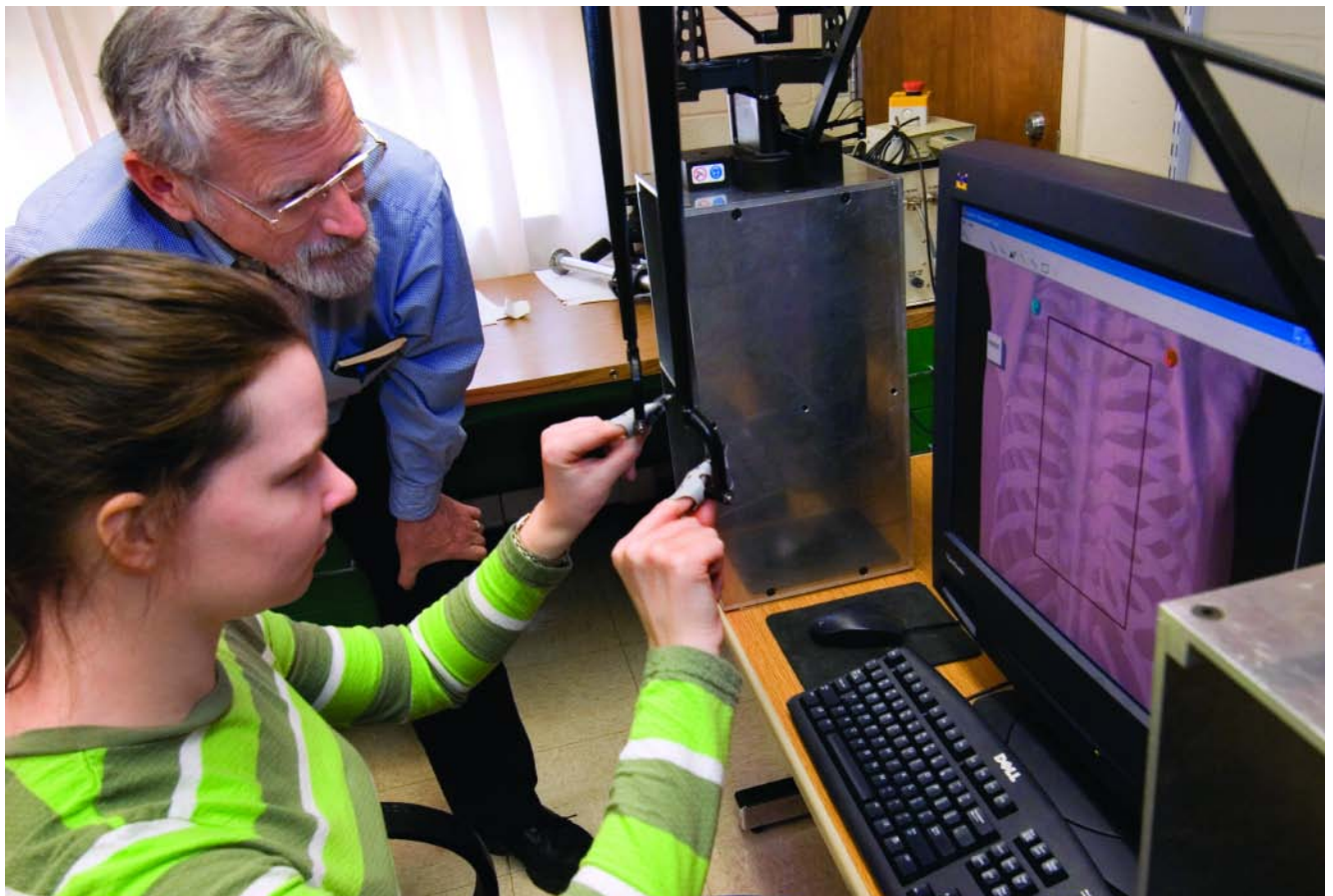
Current diabetes, obesity and cardiovascular research offer profound implications for disease processes endemic to Southeastern Ohio. Similarly, psychosocial medical research offers significant insights into the health status, health-seeking behaviors and risk factors of vulnerable and underserved populations. Other ongoing research projects reach from local Southeastern Ohio regions to the Antarctic, Ecuador and Kenya.

Research carried out at Ohio University's Edison Biotechnology Institute has resulted in the creation, production and marketing of several new drugs to treat diabetes and acromegaly. Student participation in research at OU-COM makes a significant contribution to the success of our research programs.

For information about opportunities for student research – [www.oucom.ohiou.edu/Admissions/research-opp.htm](http://www.oucom.ohiou.edu/Admissions/research-opp.htm).



The College of Osteopathic Medicine, in partnership with the Russ College of Engineering, is embarking on an innovative project that's designed to create an environment that encourages collaboration between medicine and engineering. Soon to break ground, the new integrated learning and research facility will be one of a handful in the country where this kind of collaboration is taking place on a daily basis. Learn more at [www.oucom.ohiou.edu/researchbuilding/](http://www.oucom.ohiou.edu/researchbuilding/).





*“Students have a great opportunity to be involved in research dealing with diabetes, parasitic infections, neurobiology – a whole smorgasbord of offerings. These experiences give students a clear idea of the disease state and approaches to try and combat the progression of the disease; it gives them a hands-on, real-life exposure to the connection between research and patient care.”*

John Kopchick, Ph.D.,  
Molecular Biologist and  
Goll Eminent Scholar



*“It all started with Summer Scholars. It made me more confident. It gave me an opportunity to be the kind of doctor I want to become.”*

Jose Bustillo, OMS II

## SUMMER PROGRAMS

If you are looking for programs to give you more research experience or better insight into what medical school is like, our *Summer Undergraduate Research Fellowship (SURF)*, [www.oucom.ohio.edu/Admissions/surfprog.htm](http://www.oucom.ohio.edu/Admissions/surfprog.htm), or *Summer Scholars Program*, [www.oucom.ohio.edu/SummerScholars/](http://www.oucom.ohio.edu/SummerScholars/), might be for you.

The SURF program gives undergraduate students eight weeks of active laboratory work under the guidance of a biomedical science faculty member.

Summer Scholars is a rigorous, six-week, premed preparation program for underrepresented minorities and economically and/or educationally disadvantaged students. Courses are taught by OU-COM faculty and staff.

Both programs include room, board, living expenses, educational credit and an opportunity for eligible participants to interview at OU-COM.

# COMMUNITY AND CLINICAL EXPERIENCE

From the beginning of your first year, you'll be assigned to work with physicians and other health-care providers in a variety of settings. These experiences are designed to enhance your awareness of the cultural, economic and social issues that affect health-care delivery and further develop your communication skills, while allowing you to become involved with the real world of medicine.

The Ohio University College of Osteopathic Medicine is one of seven medical schools that participate in the Ohio Statewide AHEC (Area Health Education Center) Program. Through OU-COM's AHEC program office, you can choose from a variety of service learning activities such as health fairs, school visits and campaigns to raise public awareness of health issues.

Training opportunities in the local community and abroad are some of the most effective resources OU-COM brings to bear on your medical education. The knowledge and experience that you gain by caring for patients and following their progress cannot be duplicated in a lecture hall or in a small-group setting. Whether you provide care in the local Southeastern Ohio region, or take advantage of one of our international clinical rotations, the value of direct patient experience cannot be overstated. Community Service Programs and AHEC information can be found at [www.oucom.ohiou.edu/csp/](http://www.oucom.ohiou.edu/csp/).



*"Community Service Program's outreach experiences allow our students to deliver care to people throughout the Southeastern Ohio region. These opportunities promote OU-COM's commitment to clinically relevant medical education by placing students in direct contact with real patients in a true setting."*

Kathy Trace, Director,  
Community Service Programs



# INTERNATIONAL PROGRAMS

Our international programs allow you to train in culturally diverse settings and facilitate a global perspective of health and disease. Programs include:

- Charles J. Cannon Edinburgh Geriatric Tutorial-Scotland
- Community-Based Tropical Disease Research-Ecuador
- Kenyan Grandparents Study-Kenya
- SHARE Kenya-Ohio-Kenya
- Village Mountain Mission-Dominican Republic
- Ohio University and CEDEINFA Partnership-San Salvador
- Clinical Rotation-Ecuador

For program details and additional opportunities, visit

[www.oucom.ohio.edu/International/index.htm](http://www.oucom.ohio.edu/International/index.htm).

*“Our students have life-changing experiences abroad. They must confront issues of poverty and gender inequity. They see diseases and health problems that they do not see in the U.S. They gain an edge as physicians because they are forced to rely upon interpreters, their diagnostic skills and the physical examination, rather than lab tests and technology.”*

Gillian Ice, Ph.D., M.P.H.,  
Director, International Programs





## CAMPUS LIFE

Our students love the fact that the College of Osteopathic Medicine is part of a large research university in scenic Athens, Ohio.

Whatever your interests, the Ohio University campus has a place for you to indulge them. The 168,000 square-foot Ping Center—one of the largest campus recreation centers in the country—anchors the active life, along with other topnotch facilities on campus. So, whether it's swimming, ice skating, golfing, tennis, scuba, basketball, running, indoor climbing or dancing, you can do it here.

If the sporting life appeals to you, you can participate in OU-COM's year 1 vs. year 2 touch football game or in intramural sports, where you'll find expected and unexpected sports on the roster, such as soccer and broomball.

Are you more of a spectator than a player? With Ohio University's many men's and women's NCAA division 1 teams, a sports fan has plenty to choose from.

Whether your tastes run more toward music, theater or dance performances, poetry slams, art or photography openings, rock music, film debuts or thought-provoking lectures, you'll always find something to do on our culture-rich campus.

The City of Athens also offers many amenities, including a large recreation center, skate park, hiking trails and a bike path that runs alongside the Hocking River.

Many scenic areas are located near Athens that you can enjoy as weekend retreats. Among the most popular are Dow Lake, Lake Hope, the caves and gorges of the Hocking Hills State Park area near Logan, and Burr Oak Lake in Glouster.

*"It's the best of both worlds; there's always something going on. There are plenty of opportunities for service learning where you can get involved with local organization and schools."*

Tracey Banks,  
OMS II



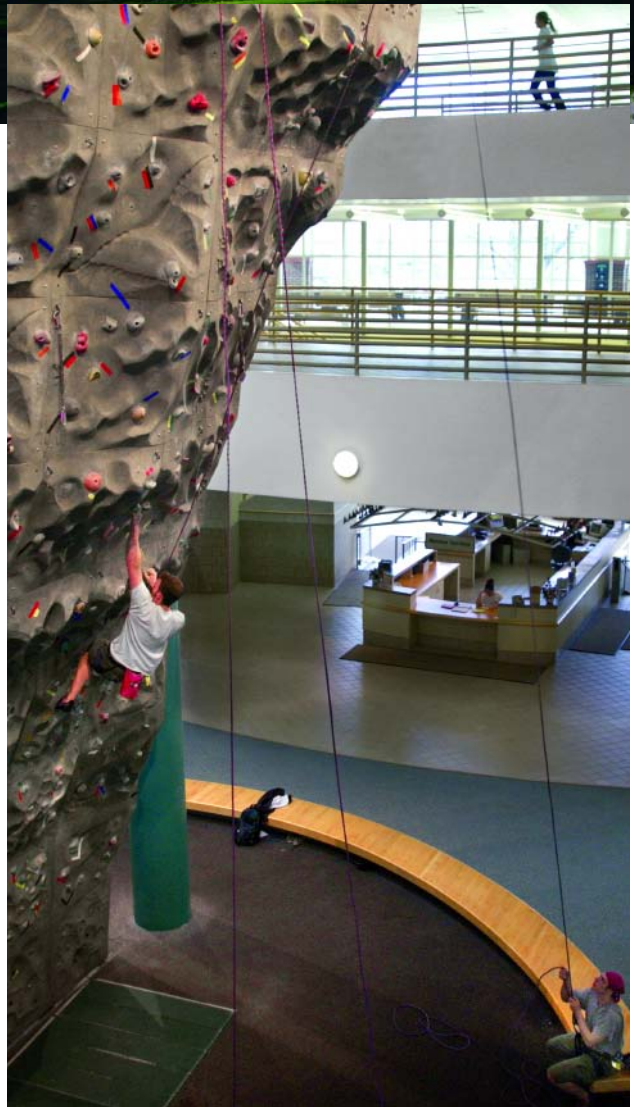


Photo: Rick Fatca

Ohio University  
College of  
Osteopathic Medicine

2007-2008

**Office of Admissions**

**102 Grosvenor Hall**

**Ohio University**

**College of Osteopathic Medicine**

**Athens, Ohio 45701**

**(800) 345-1560**

**[www.oucom.ohiou.edu](http://www.oucom.ohiou.edu)**

© 2007 The Ohio University College of Osteopathic Medicine complies with all federal, state, and local laws regarding equal access and non-discriminatory policies and practices.



**OHIO**  
UNIVERSITY

**College of Osteopathic Medicine**